

Monthly Report (January 2012)
Grants that end after January 13, 2012

Table 1. By department and type (grant totals includes indirect costs, excludes all clinical trials)

Department	Research	Research Training	Research Infrastructure	Research Related	Development	Other Awards	Total
Animal Care	0	0	2,693,442	0	0	18,146	2,711,588
Biochemistry and Cancer Biology	2,278,732	379,453	8,432,767	0	251,248	0	11,342,200
Center for Molecular & Behavioral Neuroscience	797,222	0	0	0	0	0	797,222
Center for Health Disparities/HIV	1,085,061	60,000	0	0	0	406,125	1,551,186
Center for Women's Health							
Research	1,232,453	0	0	0	0	0	1,232,453
Central Administration	2,442,265	0	0	4,738,399	0	1,837,578	9,018,242
Dental Public Health	20,000	0	0	0	0	8,353	28,353
Family & Community Medicine	913,704	0	241,405	0	0	2,126,195	3,281,304
Financial Aid	0	0	0	0	0	250,738	250,738
Internal Medicine	4,920,775	554,330	569,059	276,177	0	515,813	6,836,154
Medical/Professional Education	0	264,926	0	0	0	0	264,926
Microbiology and Immunology	1,888,660	407,910	38,770	0	0	0	2,335,340
Neuroscience and Pharmacology	1,514,953	0	945,000	0	0	0	2,459,953
OB/GYN	837,523	0	43,173	0	0	61,908	942,604
Oral Biology & Research	236,125	0	0	0	0	0	236,125
Pathology, Anatomy and Cell Biology	160,344	0	140,144	0	0	0	300,488
Physiology	2,439,319	51,326	373,535	0	0	0	2,864,180
Psychiatry	0	0	0	0	0	386,359	386,359
Research	0	0	707,645	0	0	0	707,645
SOD Dean	0	0	0	0	0	1,533,579	1,533,579
SOGS Dean	0	1,374,768	0	0	0	25,000	1,399,768
SOM Dean	0	0	750,000	0	0	5,696,235	6,446,235
Surgery	363,633	0	0	0	0	0	363,633
Grand Total	21,130,769	3,092,713	14,934,940	5,014,576	251,248	12,866,029	57,290,275

Monthly Report (January 2012)
Grants that end after January 13, 2012

Table 2. By department and type (excludes awards in the " Other awards"column of table 1)

Department	Research	Research Training	Research Infrastructure	Research Related	Development	Total
Animal Care	0	0	2,693,442	0	0	2,693,442
Biochemistry and Cancer Biology	2,278,732	379,453	8,432,767	0	251,248	11,342,200
Center for Molecular & Behavioral Neuroscience	797,222	0	0	0	0	797,222
Center for Health Disparities/HIV	1,085,061	60,000	0	0	0	1,145,061
Center for Women's Health Research	1,232,453	0	0	0	0	1,232,453
Central Administration	2,442,265	0	0	4,738,399	0	7,180,664
Dental Public Health	20,000	0	0	0	0	20,000
Family & Community Medicine	913,704	0	241,405	0	0	1,155,109
Financial Aid	0	0	0	0	0	0
Internal Medicine	4,920,775	554,330	569,059	276,177	0	6,320,341
Medical/Professional Education	0	264,926	0	0	0	264,926
Microbiology and Immunology	1,888,660	407,910	38,770	0	0	2,335,340
Neuroscience and Pharmacology	1,514,953	0	945,000	0	0	2,459,953
OB/GYN	837,523	0	43,173	0	0	880,696
Oral Biology & Research	236,125	0	0	0	0	236,125
Pathology, Anatomy and Cell Biology	160,344	0	140,144	0	0	300,488
Physiology	2,439,319	51,326	373,535	0	0	2,864,180
Psychiatry	0	0	0	0	0	0
Research	0	0	707,645	0	0	707,645
SOD Dean	0	0	0	0	0	0
SOGS Dean	0	1,374,768	0	0	0	1,374,768
SOM Dean	0	0	750,000	0	0	750,000
Surgery	363,633	0	0	0	0	363,633
Grand Total	21,130,769	3,092,713	14,934,940	5,014,576	251,248	44,424,246

Monthly Report (January 2012)
Grants that end after January 13, 2012

Table 3. Current research awards by major component

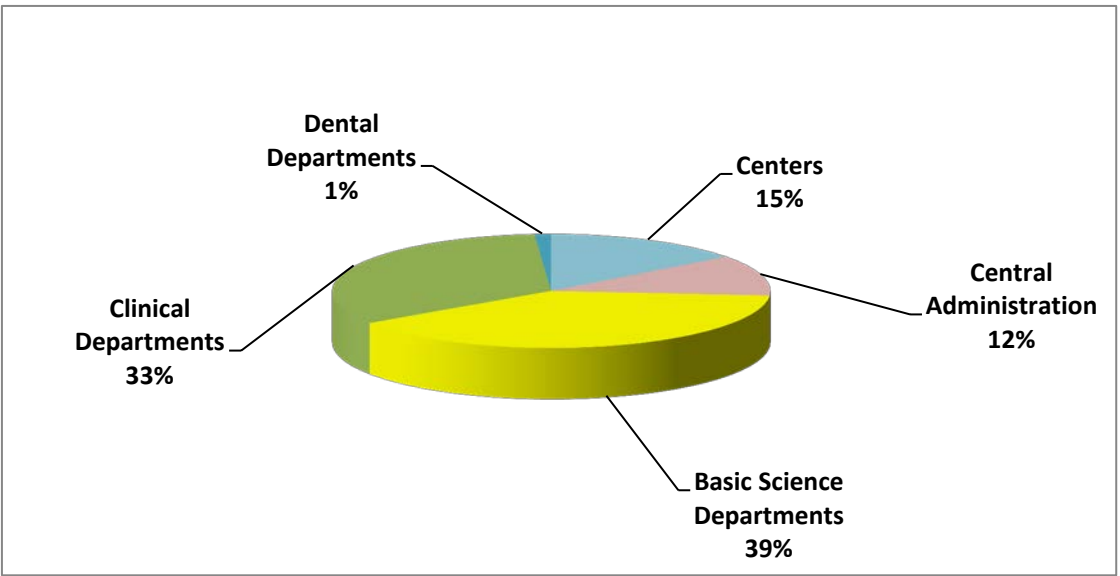
This table includes only the awards that appear in the "Research" column of table 2.

Centers	Total Cost
Center for Molecular & Behavioral Neuroscience	797,222
Center for Health Disparities/HIV	1,085,061
Center for Women's Health Research	1,232,453
Total	\$3,114,736
Central Administration	
Central Administration	2,442,265
Total	\$2,442,265
Basic Science Departments	
Biochemistry and Cancer Biology	2,278,732
Microbiology and Immunology	1,888,660
Neuroscience and Pharmacology	1,514,953
Pathology, Anatomy and Cell Biology	160,344
Physiology	2,439,319
Total	\$8,282,008
Clinical Departments	
Family & Community Medicine	913,704
Internal Medicine	4,920,775
OB/GYN	837,523
Surgery	363,633
Total	\$7,035,635
Dental Departments	
Dental Public Health	20,000
Oral Biology & Research	236,125
Total	\$256,125
Grand Total	\$21,130,769

Monthly Report (January 2012)
Grants that end after January 13, 2012

Figure 1. Distribution of research awards by major component
This figure includes only the awards that appear in the "Research" column of table 2.

Centers	\$3,114,736
Central Administration	\$2,442,265
Basic Science Departments	\$8,282,008
Clinical Departments	\$7,035,635
Dental Departments	\$256,125
Total	\$21,130,769



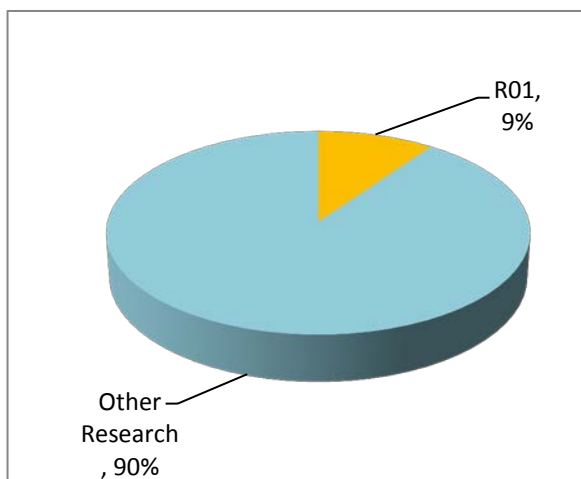
Monthly Report (January 2012)

Grants that end after January 13, 2012

Figure 2. R01 awards as a fraction of research funding

This figure contains only the awards that appear in the "Research" column of table 2.

Department	PI	Title	Sponsor	SponsorNumber	DC	Start	End
Biochemistry and Cancer Biology	Chen, Zhenbang	Pten-loss dysregulated pathways in prostate cancer	National Center Minority Health/Health Disparities (NCMHD)	5 R01 MD004038 03	247,500	05/01/2011	04/30/2012
	Ramesh, Aramandla	Mechanisms for benzo(a) pyrene-induced colon cancer exacerbation by dietary fat	National Institute of General Medical Sciences (NIGMS)	5 R01 CA142845 03	181,148	01/01/2012	12/31/2012
Center for Molecular & Behavioral Neuroscience	Rao, Uma	Neuronal risk markers for nicotine dependence in youth	National Institute on Drug Abuse (NIDA)	7 R01 DA017805 06	226,989	01/21/2011	03/31/2012
	Rao, Uma	Treatment prediction in adolescent and adult depression	National Institute of Mental Health (NIMH)	7 R01 MH068391 05	284,029	03/20/2011	03/31/2013
Center for Women's Health Research	Al-Hendy, Ayman	Targeting adenovirus for gene therapy of uterine Leiomyoma	National Institute of Child Health/Human Dev. (NICHD)	5 R01 HD046228 08	194,610	03/01/2011	02/29/2012
	Al-Hendy, Ayman	Targeting adenovirus for gene therapy of uterine Leiomyoma(supplement)	National Institute of Child Health/Human Dev. (NICHD)	3 R01 HD046228 08S1	102,850	03/01/2011	02/29/2012
	Al-Hendy, Ayman	Targeting adenovirus for gene therapy of uterine Leiomyoma(supplement)	National Institute of Child Health/Human Dev. (NICHD)	3 R01 HD046228 08S2	43,498	03/01/2011	02/29/2012
Physiology	Guo, Zhongmao	Endoplasmic reticulum stress and foam cell formation (ARRA)	National Heart, Lung and Blood Institute (NHLBI)	5 R01 HL089382 02	298,184	07/01/2010	06/30/2012
	Khoshbouei, Habibeh	Methamphetamine & amphetamine differentially affect dopamine transporter activity	National Institute on Drug Abuse (NIDA)	5 R01DA026947 02	264,539	02/01/2011	01/31/2012
	Khoshbouei, Habibeh	Alpha-synuclein regulates dopamine transporter functions	National Institute of Neurological Disorders/Stroke (NINDS)	5 R01 NS071122 02	242,944	05/01/2011	04/30/2012



R01	2,086,291
Other Research	19,044,478
Total Research	\$21,130,769

Monthly Report (January 2012)

Grants that end after January 13, 2012

In the 'Type' column, D = development; I = infrastructure; R = research; RR = research-related; TF = individual trainee fellowship; TI = institutional training grant; O = non research grants; RT = industry sponsored; PI= intramural pilot

Department	PI	Title	Type	Sponsor	SponsorNumber	DC	IDC
Animal Care	Binhazim, Awadh	Renovation of the animal care facility (ARRA)	I	National Center for Research Resources (NCRR)	1 G20 RR030872 01	2,693,442	0
	Virgous, Carlos	How does cocoa epicatechin promote health and postpone aging(subcontract)	O	Tennessee State University	2011	12,442	5,704
					Total	2,705,884	5,704
Biochemistry and Cancer Biology	Adunyah, Samuel	MMC and VICC: Partners in eliminating cancer disparities: admin core (Cancer Alliance)	I	National Cancer Institute (NCI)	5 U54 CA091408 10	209,980	95,541
	Adunyah, Samuel	Training in cellular and molecular imaging of cancer (subcontract)	TI	National Cancer Institute (NCI)	1 R25 CA136440 01	11,861	949
	Adunyah, Samuel	Training in cellular and molecular imaging of cancer (subcontract)	TI	National Cancer Institute (NCI)	5 R25 CA136440 03	53,899	3,112
	Adunyah, Samuel	Recruitment (Cancer Alliance)	I	National Cancer Institute (NCI)	5 U54 CA091408 10	326,933	91,880
	Adunyah, Samuel	Training in cancer research (Cancer Alliance)	TI	National Cancer Institute (NCI)	5 U54 CA091408 10	23,340	6,638
	Adunyah, Samuel	Planing and evaluation core (Cancer Alliance)	I	National Cancer Institute (NCI)	5 U54 CA091408 10	49,260	22,413
	Adunyah, Samuel	MSPH training (Cancer Alliance)	TI	National Cancer Institute (NCI)	5 U54 CA091408 10	12,590	5,728
	Adunyah, Samuel	MMC and VICC: Partners in eliminating cancer disparities: faculty recruitment (ARRA)	I	National Cancer Institute (NCI)	3 U54 CA091408 09S1	958,906	399,391
	Ochieng, Josiah	Role of fetuin-A in tumor cell growth	R	National Institute of General Medical Sciences (NIGMS)	5 SC1 CA134018 04	250,000	116,250
	Valenzuela, Manuel	Initiation patterns of DNA replication in cancer cell lines	R	National Cancer Institute (NCI)	5 SC1 CA138180 04	247,500	115,088
	Eltom, Sakina	The aryl hydrocarbon receptor and breast cancer	R	National Cancer Institute (NCI)	5 SC1 CA153326 02	247,500	115,088
	Ramesh, Aramandla	Mechanisms for benzo(a) pyrene-induced colon cancer exacerbation by dietary fat	R	National Institute of General Medical Sciences (NIGMS)	5 R01 CA142845 03	181,148	84,234
	Stewart, LaMonica	Regulation of prostate cancer growth by PPARg ligands	D	National Cancer Institute (NCI)	5 K01 CA114253 05	140,194	11,216
Stewart, LaMonica	Regulation of prostate cancer growth by PPARg ligands (ARRA)	D	National Cancer Institute (NCI)	3 K01 CA114253 04S1	92,443	7,395	
Son, Deok-Soo	Roles of inflammation-driven chemokines in the pathogenesis of ovarian cancer (SC1)	R	National Institute of Allergy/Infectious Diseases (NIAID)	5 SC1 AI089073 03	245,025	113,937	
Chen, Zhenbang	Molecular mechanisms of prostate tumorigenesis	R	National Cancer Institute (NCI)	5 U54 CA091408 10	103,350	47,024	
Chen, Zhenbang	Pten-loss dysregulated pathways in prostate cancer	R	National Center Minority Health/Health Disparities (NCMHD)	5 R01 MD004038 03	247,500	115,088	
Adunyah, Samuel	MMC and VICC: Partners in eliminating cancer disparities: biobanking management program (BMaP) (ARRA)	I	National Cancer Institute (NCI)	5 U54 CA091408 09S2	186,650	85,397	
Adunyah, Samuel	MeTRC administrative supplement: pilot projects (MeTRC) (ARRA)	I	National Center for Research Resources (NCRR)	3 U54 RR0226140 01S1	266,976	124,144	

Department	PI	Title	Type	Sponsor	SponsorNumber	DC	IDC
	Adunyah, Samuel	Minority institutional research training program	TI	National Heart, Lung and Blood Institute (NHLBI)	5 T32 HL007735 17	215,735	13,056
	Adunyah, Samuel	Meharry clinical and translational research center: administrative core (MeTRC)	I	National Center for Research Resources (NCRR)	5 U54 RR026140 03	2,838,225	1,319,775
	Huderson, Ashley	Chemoprevention of benzo(a)pyrene-induced colon carcinogenesis	TF	National Institutes of Health	1 F31 ES019432 01A1	32,545	0
	Adunyah, Samuel	MMC,VICC & TSU: Partners in eliminating cancer disparities: admin core (Cancer Alliance)	I	National Cancer Institute (NCI)	1 U54 CA163069 01	1,033,196	424,100
	Shanker, Anil	Improving NK cell adoptive immunotherapy in breast cancer by combinatorial bortezomib and Notch DLL1 treatments (MeTRC)	R	National Center for Research Resources (NCRR)	1 U54 RR026140 01	50,000	0
					Total	8,024,756	3,317,444
Center for Molecular & Behavioral Neuroscience							
	Rao, Uma	Neuronal risk markers for nicotine dependence in youth	R	National Institute on Drug Abuse (NIDA)	7 R01 DA017805 06	226,989	105,550
	Rao, Uma	Treatment prediction in adolescent and adult depression	R	National Institute of Mental Health (NIMH)	7 R01 MH068391 05	284,029	130,654
	Rao, Uma	Coping with interpersonal violence in African American women (MeTRC)	R	National Center for Research Resources (NCRR)	1 U54 RR026140 01	50,000	0
					Total	561,018	236,204
Center for Health Disparities/HIV							
	Hildreth, James	Capacity building assistance (CBA) to improve the delivery and effectiveness	O	Centers for Disease Control	5 U65 PS001720 03	306,509	99,616
	Alcendor, Donald	Therapeutic potential of galectin 3, fibulin 2 and fibulin 5 kaposi's sarcoma(CFAR)(subcontract)	R	National Institute of Allergy/Infectious Diseases (NIAID)	3 P30 AI054999 06S1	37,123	17,177
	Liu, Bindong	Characterizing a small molecule of Streptococcus cristatus for HIV drug design (SC1)	R	National Institute of General Medical Sciences (NIGMS)	5 SC1 GM089269 03	222,750	103,579
	Dong, Xinhong	Novel targets for discovering peptide inhibitors of HIV-1 replication	R	National Institute of Allergy/Infectious Diseases (NIAID)	5 R21 AI089330 02	123,750	56,925
	Dash, Chandranvanu	Role of nucleic acid structure in HIV-1 replication	R	National Institute on Drug Abuse (NIDA)	5 R00 DA024558 05	165,815	73,528
	Popik, Waldemar	Mechanism of HIV-1 infection of urinary podocytes in HIVAN	R	National Institutes of Health	5 R21 DK089980 02	122,053	56,755
	Dash, Chandranvanu	Cocaine-induced epigenetic changes in CD4+ T cells and HIV-1 replication	R	National Institute on Drug Abuse (NIDA)	5 R03 DA030896 02	24,250	11,276
	Madison, Marisa	Semen derived enhancer of viral infection (SEVI) and sexual transmission of HIV-1	TF	L'Oreal USA	2011	60,000	0
	Dash, Chandranvanu	Role of nucleic acid structure in HIV-1 replication(supplement)	R	National Institute on Drug Abuse (NIDA)	3 R00 DA024558 05S1	48,000	22,080
					Total	1,110,250	440,936
Center for Women's Health Research							
	Al-Hendy, Ayman	Targeting adenovirus for gene therapy of uterine Leiomyoma	R	National Institute of Child Health/Human Dev. (NICHD)	5 R01 HD046228 08	194,610	90,494
	Al-Hendy, Ayman	Adenovirus to target adhesion fibroblast for prevention of post operative adhesions (subcontract)	R	Agency for International Development	2010	132,636	12,364
	Al-Hendy, Ayman	Targeting adenovirus for gene therapy of uterine Leiomyoma(supplement)	R	National Institute of Child Health/Human Dev. (NICHD)	3 R01 HD046228 08S1	102,850	47,825

Department	PI	Title	Type	Sponsor	SponsorNumber	DC	IDC
	Al-Hendy, Ayman	Industry sponsored research	R	AstraZeneca	2011	61,148	28,128
	Al-Hendy, Ayman	Meharry RCMI program in women's health research: Green tea study (RCMI) (ARRA)	R	National Center for Research Resources (NCRR)	3 G12 RR003032 26S1	340,577	158,368
	Al-Hendy, Ayman	Targeting adenovirus for gene therapy of uterine Leiomyoma(supplement)	R	National Institute of Child Health/Human Dev. (NICHD)	3 R01 HD046228 08S2	43,498	19,955
					Total	875,319	357,134
Central Administration	Riley, Wayne	Endowment for health disparities research	RR	National Center Minority Health/Health Disparities (NCMHD)	5 S21 MD000104 11	4,338,557	0
	Riley, Wayne	Diverse healthcare workforce development project (OMH cooperative agreement)	O	Office of Minority Health	6 MPCMP081013 05 02	628,546	209,032
	Mevs, Osei	Meharry Medical Fiscal Year 2009 historic fund grant to historically black colleges and universities(ARRA)	O	National Park Services	2010	1,000,000	0
	Riley, Wayne	Meharry RCMI program in women's health research: parent grant (RCMI)	R	National Center for Research Resources (NCRR)	5 G12 RR003032 27	1,579,049	667,216
	Howard, Daniel	Robert Wood Johnson Center for Health Policy	R	Robert Wood Johnson Foundation	2011	60,000	0
	Howard, Daniel	Text message feasibility study(subcontract)	RR	Agency for Healthcare Research and Quality	2011	136,986	63,014
	Riley, Wayne	Endowment for health disparities research-administrative supplement for bioethics training(supplement)	RR	National Center Minority Health/Health Disparities (NCMHD)	3 S21 MD000104 11S1	199,842	0
	Howard, Daniel	Meharry-John Hopkins center for prostate cancer research	R	Department of Defense (DOD)	W81XWH 07 1 0350	131,853	4,147
					Total	8,074,833	943,409
Dental Public Health	Thompson, Mabelle	Mid-Tennessee interdisciplinary instruction in neurodevelopment and related disabilities (MIND) program (subcontract)	O	Health Resources and Services Administration	5 T73 MC 00050 12	7,734	619
	Thompson, Mabelle	An interprofessional educational approach to increasing access to health services for African American women at risk for pre-term low birth weight babies	PI	Robert Wood Johnson Foundation	2012	20,000	0
					Total	27,734	619
Family & Community Medicine	Juarez, Paul	Nashville youth violence prevention urban partnership academic center of excellence	R	National Center for Injury Prevention and Control	5 U49 CE001091 05	714,631	78,199
	Juarez, Paul	Community outreach core (Cancer Alliance)	I	National Cancer Institute (NCI)	5 U54 CA091408 10	187,398	5,264
	Chakrabarty, Sangita	Meharry occupational medicine residency training program	O	Centers for Disease Control	5 T01 OH009406 04	164,532	11,563
	Agbot, Vincent	Biostatistics shared resource (Cancer Alliance)	I	National Cancer Institute (NCI)	5 U54 CA091408 10	33,500	15,243
	Mouton, Charles	Geriatric education centers	O	Health Resources and Services Administration	5 UB4 HP19055 02 01	434,600	20,994
	Juarez, Paul	Tennessee model AHEC program	O	Health Resources and Services Administration	5 U77 HP03040 16 00	595,025	5,749
	Zoorob, Roger	Residency training in the patient centered medical home model of care	O	Health Resources and Services Administration	1 D58 HP20796 01 00	218,974	17,518

Department	PI	Title	Type	Sponsor	SponsorNumber	DC	IDC
	Mouton, Charles	Prostate cancer health literacy in rural versus urban African American men(subcontract)	R	National Cancer Institute (NCI) Tennessee Department of Transportation	5 R21 CA132671 02	25,739	11,969
	Goldzweig, Irwin	Middle Tennessee child passenger safety center Southeast fetal alcohol spectrum disorders regional training center and practice-based prevention network	O	Centers for Disease Control	2012	115,942	17,391
	Zoorob, Roger	Culturally appropriate childhood obesity prevention program for Hispanic families(supplement)	O	National Center Minority Health/Health Disparities (NCMHD) Health Resources and Services Administration	1 U84 DD000882 01	207,547	67,453
	Juarez, Paul	Faculty development in primary care Walk and bike safety: for beginning level adult english language learners(subcontract)	R	Preusser Research Group	3 P20 MD000516 08S1	57,159	26,007
	Matthews-Juarez, Patricia		O		1 D55 HP23199 01 00	202,708	16,217
	Goldzweig, Irwin		O		2012	20,536	9,446
					Total	2,978,291	303,013
Financial Aid	Tharpe, Barbara	Scholarships for disadvantaged students(SDS)	O	Health Resources and Services Administration	1 T08HP22355 01 00	250,738	0
					Total	250,738	0
Internal Medicine	Hargreaves, Margaret	Diabetes research and training center: health disparities core (subcontract)	I	National Institute of Diabetes/Digestive/Kidney (NIDDK)	5 P60 DK020593 33	180,470	82,557
	Hargreaves, Margaret	SPORE in lung cancer (subcontract)	R	National Cancer Institute (NCI)	5 P50 CA090949 10	6,844	3,182
	Hargreaves, Margaret	Southern community cohort study administrative supplement (subcontract)(ARRA)	R	National Cancer Institute (NCI) Health Resources and Services Administration	3 R01 CA92447 08S1	113,698	52,870
	Berthaud, Vladimir	Ryan White part C outpatient EIS program	O	Vanderbilt Ingram Cancer Center Affliate Network	5 H76HA01706 08 01	278,194	14,306
	Wolff, Steven	Industry sponsored research	RT		VICC HN 0585	500	0
	Wolff, Steven	Minority based community clinical oncology program at Meharry Medical College	R	National Cancer Institute (NCI)	5 U10 CA107612 08	253,181	45,361
	Wolff, Steven	Minority patient accrual core (Cancer Alliance)	I	National Cancer Institute (NCI)	5 U54 CA091408 10	185,873	21,754
	Wolff, Steven	Clinical training fellow (Cancer Alliance)	TI	National Cancer Institute (NCI) National Center for Research Resources (NCRR)	5 U54 CA091408 10	65,000	0
	Wolff, Steven	Clinical research and education for career development	TI		5 R25 RR017577 10	455,760	33,570
	Wolff, Steven	MMC and VICC: partnering for survivorship	O	National Cancer Institute (NCI) National Heart, Lung and Blood Institute (NHLBI)	5 P20 CA144809 02	156,368	66,945
	Okafor, Henry	Industry sponsored research	RT		5 R01 HL087254 05	2,710	0
	Wolff, Steven	Telephone linked care: an IT enabled integrated system for cancer symptom relief (subcontract)	R	National Cancer Institute (NCI)	5 R01 CA120558 04	7,740	3,599
	Hargreaves, Margaret	Meharry Medical College-CHC Community Networks Program Center	R	National Institutes of Health	5 U54 CA153708 02	567,623	175,792
	Wolff, Steven	Industry sponsored research	RT	Novartis and Schering	2009	6,000	0
	Murray, John	Industry sponsored research	RT	Johnson & Johnson	2010	743	0

Department	PI	Title	Type	Sponsor	SponsorNumber	DC	IDC
	Faulkner, Marquetta	Primary care residency expansion (PCRE)	R	Health Resources and Services Administration	1 T89 HP20723 01 00	2,666,667	213,333
	White, Richard	Health communication and health literacy to improve care for Latinos with diabetes	RR	National Institute of Diabetes/Digestive/Kidney (NIDDK)	1 K23 DK092470 01	140,550	11,244
	White, Richard	Addressing health communication and health literacy in Latino adults with diabetes	PI	Robert Wood Johnson Foundation	2011	20,000	0
	White, Richard	Growing right onto wellness (GROW) (subcontract)	RR	National Institutes of Health	5 U01 HL103620 02	16,071	7,312
	Hargreaves, Margaret	Center for diabetes translation research(subcontract)	R	National Institute of Diabetes/Digestive/Kidney (NIDDK)	1 P30 DK092986 01	139,759	63,590
	Hargreaves, Margaret	Meharry Medical College-CHC Community Networks Program Center	R	National Institutes of Health	3 U54 CA153708 02S4	65,272	29,970
	Murray, John	Industry sponsored research	RT	ACTELION Pharmaceuticals Ltd	2011	11,391	0
	Hargreaves, Margaret	The Vanderbilt institute for clinical and translational research (VICTR) (subcontract)	I	National Center for Research Resources (NCRR)	3 UL1 RR024975 05S2	12,949	5,956
	Berthaud, Vladimir	HIV/AIDS center of excellence program	I	Tennessee Department of Health Center for Medicare and Medicaid Services	2011	78,400	1,100
	Patel, Kushal	Improving diabetes management in African Americans using community health centers	RR	National Cancer Institute (NCI)	1 10CMS330899 01 00	95,546	5,454
	Hargreaves, Margaret	Feasibility of a multicenter obesity reduction community trial(supplement)(GMaP)	R	National Institutes of Health	3 U54 CA153708 02S2	124,749	44,104
	Hargreaves, Margaret	Pilot project to develop a cross regional BMaP biospecimen database(supplement)	R	National Cancer Institute (NCI)	3 U54 CA153708 02S1	116,534	53,120
	Wolff, Steven	Minority based community clinical oncology program at Meharry Medical College(supplement)	R	National Center for Research Resources (NCRR)	5 U10CA107612 08	92,287	11,500
	Patel, Kushal	A questionnaire to assess biospecimen donation among African Americans (MeTRC)	R	National Center for Research Resources (NCRR)	1 U54 RR026140 01	50,000	0
					Total	5,910,879	946,619
Medical/Professional Education	DeRiemer, Susan	Meharry health sciences leadership academy	TI	National Center for Research Resources (NCRR)	5 R25 RR026031 02	247,159	17,767
					Total	247,159	17,767
Microbiology and Immunology	Ramasamy, Raju	Mechanism of biogenesis of atypical alphaviruses	R	National Institute of Allergy/Infectious Diseases (NIAID)	5 SC1 AI081655 04	245,025	113,937
	Villalta, Fernando	Molecular analysis of trypanosome infection	R	National Institute of Allergy/Infectious Diseases (NIAID)	5 SC1 AI080580 04	242,798	112,901
	Villalta, Fernando	Research training in cardiovascular biology at Meharry	TI	National Heart, Lung and Blood Institute (NHLBI)	5 T32 HL007737 18	179,299	10,880
	Villalta, Fernando	Molecular microbial pathogenesis training program	TI	National Institute of Allergy/Infectious Diseases (NIAID)	5 T32 AI007281 23	144,878	8,736
	Nowicki, Stella	Loss of complement protective CD55 expression in endometriosis(subcontract)	R	National Institute of Child Health/Human Dev. (NICHD)	5 R01 HD055648 05	111,477	50,722

Department	PI	Title	Type	Sponsor	SponsorNumber	DC	IDC
	Nowicki, Stella	Drew RCMI translational research network (RTRN)(subcontract)	I	National Center for Research Resources (NCRR)	5 U54 RR022762 05	26,464	12,306
	Nde, Pius	Novel trypanosome receptor for thrombospondin-1	R	National Institute of Allergy/Infectious Diseases (NIAID)	5 SC2 AI083925 03	98,010	45,575
	Noble, Kristen	Regulation of mRNA transport in human cells	TF	National Center Minority Health/Health Disparities (NCMHD)	5 F31 HD061181 03	36,817	0
	Chaudhuri, Minu	Mitochondrial inner membrane protein translocase in trypanosoma brucei	R	National Institute of General Medical Sciences (NIGMS)	2 SC1 GM081146 05	225,000	96,808
	Chaudhuri, Gautam	Enhancement of the efficacy of conventional anticancer compounds through the repression of SNAI proteins in aggressive breast cancer cells	R	Department of Defense (DOD)	W81XWH 11 1 0697	374,251	172,156
	Tillery, Lakeisha	Protease-activated receptor-3 mediates eNOS signaling and vascular inflammation	TF	The American Physiological Society	2012	27,300	0
					Total	1,711,319	624,021
Neuroscience and Pharmacology	Charlton, Clivel	SNRP project at Meharry Medical College: administration (SNRP)	I	National Institute of Neurological Disorders/Stroke (NINDS)	5 U01 NS041071 10	650,000	295,000
	Hood, Darryl	Molecular mechanisms of polycyclic aromatic hydrocarbon toxicity (admin core) (ARCH)	R	National Institute of Environmental Health Sciences (NIEHS)	5 S11 ES014156 05	557,979	197,552
	Hood, Darryl	Behavioral and physiological consequences of disrupted MET signaling (subcontract)	R	Simons Foundation	2012	118,411	23,682
	Hood, Darryl	Mechanisms of inhaled B(a)P-induced neurotoxicity	R	National Institute of Environmental Health Sciences (NIEHS)	1 R56 ES017448 01A1	220,413	64,266
	Hood, Darryl	Educational and research interventions for the nuclear regulatory commission	R	Nuclear Regulatory Commission	NRC 27 10 515	34,364	15,636
	Mokha, Sukhbir	Control of nociception in the spinal cord	R	National Institute of General Medical Sciences (NIGMS)	9 SC1 NS078778 05	200,000	82,650
					Total	1,781,167	678,786
OB/GYN	Richard-Davis, Gloria	The national children's study - partners in children's health (subcontract)	R	National Institute of Child Health/Human Dev. (NICHD)	N01 HD 8 0004	504,592	234,636
	Sanderson, Maureen	Recruitment of epidemiologist (Cancer Alliance)	I	National Cancer Institute (NCI)	5 U54 CA091408 10	29,672	13,501
	Sanderson, Maureen	Increasing HPV Vaccine Utilization among Hispanic Girls	R	National Cancer Institute (NCI)	5 U54 CA091408 10	73,163	5,132
	Ladson, Gwinnett	Enhancing care for Spanish speaking of LEP Women through the centering pregnancy model of group prenatal care	R	March of Dimes Foundation	2011	20,000	0
	Aguinaga, Maria del Pilar	Middle Tennessee sickle cell network for coordinated care and education(subcontract)	O	Health Resources and Services Administration	1 U38 MC2220 01 00	46,723	15,185
					Total	674,150	268,454
Oral Biology & Research	Xie, Hua	Identification of a novel signaling network in Porphyromonas gingivalis	R	National Institute of Dental /Craniofacial Research (NIDCR)	1 R21 DE020915 01A1	178,000	58,125
					Total	178,000	58,125

Department	PI	Title	Type	Sponsor	SponsorNumber	DC	IDC
Pathology, Anatomy and Cell Biology	Ballard, Billy	Human tumor acquisition, histology and immunohistochemistry shared resource (Cancer Alliance)	I	National Cancer Institute (NCI)	5 U54 CA091408 10	96,319	43,825
	Marshall, Dana	Medical student summer program in integrative science and cancer research	R	National Cancer Institute (NCI)	2 R25 CA102209 06A1	148,467	11,877
					Total	244,786	55,702
Physiology	Arinze, Ifeanyi	Regulation of the expression of G[alpha]i2 by reactive oxygen species	R	National Cancer Institute (NCI)	5 SC1 CA143985 03	222,750	103,579
	Rucker, Hubert	Methamphetamine research program at Meharry Medical College: administrative core	I	National Institute on Drug Abuse (NIDA)	5 R24 DA021471 04	254,973	118,562
	Guo, Zhongmao	Endoplasmic reticulum stress and foam cell formation (ARRA)	R	National Heart, Lung and Blood Institute (NHLBI)	5 R01 HL089382 02	298,184	138,656
	Yang, Hong	Defective isoforms of ApoE induce atherogenesis via unfolded protein responses (SC1)	R	National Heart, Lung and Blood Institute (NHLBI)	5 SC1 HL101431 03	200,000	93,000
	Khoshbouei, Habibeh	Methamphetamine & amphetamine differentially affect dopamine transporter activity	R	National Institute on Drug Abuse (NIDA)	5 R01DA026947 02	264,539	99,684
	Lee, Eun-Sook	Estrogen-neuroprotection due to astroglial glu transporters occurs via TGF- α /b1 (SC1)	R	National Institute of General Medical Sciences (NIGMS)	5 SC1 GM089630 02	198,000	92,070
	Gangula, Pandu	Nitric oxide and gastric motility in female diabetics	R	National Institute of Diabetes/Digestive/Kidney (NIDDK)	5 R21 DK076704 03	123,750	57,544
	Khoshbouei, Habibeh	Alpha-synuclein regulates dopamine transporter functions	R	National Institute of Neurological Disorders/Stroke (NINDS)	5 R01 NS071122 02	242,944	91,547
	Gangula, Pandu	Oxidative stress and gastric nitergic motility in diabetics (subcontract)	R	National Institute of Diabetes/Digestive/Kidney (NIDDK)	5 P60 DK020593 33	43,200	19,872
	Okoro, Emmanuel	Human ApoE4 and Foam Cell Formation	TF	National Heart, Lung and Blood Institute (NHLBI)	5 F32 HL105044 02	51,326	0
	Nowicki, Stella	CD55, Vitamin D3, and race in preterm labor (MeTRC)	R	National Center for Research Resources (NCRR)	1 U54 RR026140 01	150,000	0
					Total	2,049,666	814,514
Psychiatry	Bailey, Rahn	TI-09-006 treatment access project II (TAP II) treatment for homeless	O	Substance Abuse and Mental Health Services Administration	5 H79 TI021672 02	277,385	65,511
	Bailey, Rahn	Ryan White treatment extension act part A	O	United Way of Metropolitan Nashville	2012	39,511	3,952
					Total	316,896	69,463
Research	Poland, Russell	The Vanderbilt institute for clinical and translational research (VICTR) (subcontract)	I	National Center for Research Resources (NCRR)	5 UL1 RR024975 05	344,209	158,336
	Murray, John	Center for cardiovascular health disparities research at Meharry Medical College	I	National Heart, Lung and Blood Institute (NHLBI)	1 P30 HL107292 01	140,000	65,100
					Total	484,209	223,436
SOD Dean	Southerland, Janet	Centers of excellence program (HBCU)	O	Health Resources and Services Administration	5 D34 HP 00002 24 00	1,419,980	113,599

Department	PI	Title	Type	Sponsor	SponsorNumber	DC	IDC
					Total	1,419,980	113,599
SOGS Dean	Lima, Maria	The Meharry RISE initiative	TI	National Institute of General Medical Sciences (NIGMS)	5 R25 GM059994 12	831,902	53,742
	Lima, Maria	The Meharry RISE initiative (supplement) (ARRA)	TI	National Institute of General Medical Sciences (NIGMS)	3 R25 GM059994 10S1	413,011	32,241
	Lima, Maria	Training in pharmacological sciences (subcontract)	TI	National Institute of General Medical Sciences (NIGMS)	5 T32 GM007628 34	41,784	2,088
	Washington, William	Tennessee long distance internet facilitated educational program for applied trainind in health (LIFE PATH) (subcontract)	O	Health Resources and Services Administration	5 UB6 HP20186 02 00	23,148	1,852
					Total	1,309,845	89,923
SOM Dean	Mouton, Charles	Centers of excellence	O	Health Resources and Services Administration	5 D34 HP16299 03 00	5,304,173	392,062
		Meharry- health careers opportunity program(HCOP)	I	Health Resources and Services Administration	2 D18HP05283 07 00	694,444	55,556
					Total	5,998,617	447,618
Surgery	Ukoli, Flora	Genetic and endocrine pathways linking obesity with prostate cancer or HGPIN (subcontract)	R	National Cancer Institute (NCI)	5 R01 CA121060 05	7,222	3,286
	Miller-Hughes, Stephania	Community Based Diabetes Medical Nutritional Therapy in African American Women	R	National Institutes of Health	1 R34 DK090670 01	125,000	58,125
	Ukoli, Flora	Infant feeding pattern and childhood obesity in low-income minority populations, implications for infant nutrition and breast feeding policy recommendations	PI	Robert Wood Johnson Foundation	2011	20,000	0
	Miller-Hughes, Stephania	Community partnership to reduce the diabetes/obesity burden among African American women in Nashville, TN(MeTRC)	R	National Center for Research Resources (NCRR)	1 U54 RR026140 01	150,000	0
					Total	302,222	61,411
					Grand Total	47,237,718	10,073,901
						57,311,619	

Monthly Report (December 2012)
Applications submitted since 7/1/11

Department	PI	SubmitDate	Title	Sponsor	Y1Request	SponsorNumber
Biochemistry and Cancer Biology	Ochieng, Josiah	07/01/2011	RCMI biannual intl health disparities symposium(subcontract)	National Center for Research Resources (NCRR)		7 U13 RR028291 03
	Chen, Zhenbang	08/23/2011	Evaluation of multi-modal imaging biomarkers of prostate cancer(subcontract)	Department of Defense (DOD)	\$47,144	
	Ochieng, Josiah	08/29/2011	Role of fetuin-A in the preparation of breast cancer metastatic niches in the lymph nodes, lungs,and bones	Department of Defense (DOD)	\$371,370	
	Shanker, Anil	08/25/2011	Combining adoptive immunotherapy with immune Notch activation and bortezomib administration in breast cancer	Department of Defense (DOD)	\$250,000	
	Chen, Zhenbang	08/23/2011	Identifying targeting novel oncogenic events in prostate cancer(subcontract)	Department of Defense (DOD)	\$123,351	
	Das, Salil	09/07/2011	Control of Secondhand Smoke Induced Disturbances in Lung Retinoid Metabolism & Signaling by RA	National Heart, Lung and Blood Institute (NHLBI)	\$1,081,872	1 R01 HL114554 01
	Ochieng, Josiah	07/14/2011	Multidisciplinary research training in cancer imaging (subcontract)	National Cancer Institute (NCI)	\$7,750	2 R25 CA092043 11
	Ochieng, Josiah	09/26/2011	Role of fetuin-A in tumor cell growth	National Institute of General Medical Sciences (NIGMS)	\$900,000	2 SC1 GM098235 05A1
	Shanker, Anil	11/05/2011	Notch in tumor host interaction(subcontract)	National Institutes of Health	\$375,000	
	Das, Salil	09/14/2011	Protection of CEES induced lung fibrosis by avastin	National Institute of Neurological Disorders/Stroke (NINDS)	\$1,175,009	1 U01 NS079222 01
	Shanker, Anil	09/01/2011	Improving NK cell adoptive immunotherapy in breast cancer by combinatorial bortezomib and Notch DLL1 treatments (MeTRC)	National Center for Research Resources (NCRR)		1 U54 RR026140 01
	Ramesh, Aramandla	12/30/2011	Male infertility caused by benzo(a)pyrene, a toxicant of military importance	Department of Defense (DOD)	\$246,537	
Center for Molecular & Behavioral Neuroscience	Morris, Matthew	09/15/2011	Coping with interpersonal violence in African American women	No Sponsor	\$29,973	
	Rao, Uma	11/28/2011	Effects of stress and energy balance on ethnic differences in depressive symptoms	National Institute of Mental Health (NIMH)	\$5,388,762	
	Rao, Uma	09/01/2011	Coping with interpersonal violence in African American women (MeTRC)	National Center for Research Resources (NCRR)	\$0	1 U54 RR026140 01
Center for Health Disparities/HIV	Dash, Chandravanu	09/07/2011	Cocaine downregulates anti-HIV microRNAs in CD4+ T cells	National Institute on Drug Abuse (NIDA)	\$200,000	1 R03 DA033892 01
	Dong, Xinhong	09/07/2011	Discovery of novel inhibitors targeting HIV-1 assembly	National Institute of Allergy/Infectious Diseases (NIAID)	\$275,000	1 R21 AI100779 01
	Dash, Chandravanu	10/14/2011	Viral miRNA in gammaretroviruses impact on gene therapy and antiviral research	National Institutes of Health	\$1,500,000	1 DP2 OD010107 01
	Dash, Chandravanu	11/28/2011	Cocaine accelerates HIV-1 pathogenesis by downregulating miR-125b in CD4+ T cells	National Institutes of Health	\$0	
Center for Women's Health Research	Al-Hendy, Ayman	09/14/2011	Targeting adenovirus for gene therapy of uterine Leiomyoma(supplement)	National Institute of Child Health/Human Dev. (NICHD)	\$43,498	3 R01 HD046228 08S2
Central Administration	Barnes, Fatima	07/29/2011	Handheld computing initiative: exploring ipads as clinical decision support tools in a residency program	United Negro College Fund	\$20,000	
	Riley, Wayne	07/28/2011	Endowment for health disparities research	National Center Minority Health/Health Disparities (NCMHD)	\$25,000,000	2 S21MD000104 12

Department	PI	SubmitDate	Title	Sponsor	Y1Request	SponsorNumber
	Howard, Daniel	12/21/2012	Meharry-John Hopkins center for prostate cancer research	Department of Defense (DOD)		W81XWH 07 1 0350
Dental Public Health	Thompson, Machel	08/18/2011	An interprofessional educational approach to increasing access to health services for African American women at risk for pre-term low birth weight bab	Robert Wood Johnson Foundation	\$20,000	
Family & Community Medicine	Bell, Vanessa	07/01/2011	Addressing health literacy and numeracy to prevent childhood obesity(supplement)(subcontract)	National Institute of Child Health/Human Dev. (NICHD)	\$150,870	
	Zoorob, Roger	07/11/2011	Primary care training and enhancement predoctoral training in primary care program	Health Resources and Services Administration	\$879,630	
	Juarez, Paul	07/01/2011	The minority youth tobacco elimination project	Office of Minority Health	\$465,904	
	Juarez, Paul	07/01/2011	Primary care training and enhancement academic administrative units in primary care program	Health Resources and Services Administration	\$800,000	
	Zoorob, Roger	07/21/2011	Southeast fetal alcohol spectrum disorders regional training center and practice-based prevention network	Centers for Disease Control National Center Minority Health/Health Disparities (NCMHD)	\$825,000	1 U84 DD000882 01
	Juarez, Paul	08/03/2011	Environmental context of health disparities	Nuclear Regulatory Commission	\$524,972	3 P20 MD000516 07S1
	Levine, Robert	08/08/2011	Nuclear radiation safety and risk communication training for physicians	National Center Minority Health/Health Disparities (NCMHD)	\$264,720	
	Juarez, Paul	09/01/2011	Culturally appropriate childhood obesity prevention program for Hispanic families(supplement)	National Center Minority Health/Health Disparities (NCMHD)	\$142,197	3 P20 MD000516 07S3
	Juarez, Paul	07/09/2011	Unsolicited administrative supplement to the health disparities research center of excellence at Meharry(supplement)	Health Resources and Services Administration	\$110,919	3 P20 MD000516 07S2
	Matthews-Juarez, Patricia	07/11/2011	Faculty development in primary care	Health Resources and Services Administration	\$1,008,020	1 D55 HP23199 01 00
	Goldzweig, Irwin	10/17/2011	Walk and bike safety: for beginning level adult english language learners(subcontract)	No Sponsor	\$20,536	
	Goldzweig, Irwin	11/05/2011	Preventive car care training	Ford Foundation	\$14,783	
	Ziegler, Carol	12/05/2011	Barriers and facilitators: urban African American women and diabetes management(DRCT)(subcontract)	National Institute of Diabetes/Digestive/Kidney (NIDDK)	\$80,000	5 P60 DK020593 32
Internal Medicine	Hargreaves, Margaret	07/15/2011	Community transformation grant(subcontract)	Centers for Disease Control National Cancer Institute (NCI)	\$339,811	
	Hargreaves, Margaret	07/27/2011	Feasibility of a multicenter obesity reduction community trial(supplement)(GMAP)	National Institutes of Health	\$168,942	3 U54 CA153708 02S2
	Hargreaves, Margaret	07/27/2011	Testing a culturally adapted clinical trials resources for low income African American women(supplement)	National Institutes of Health	\$44,946	
	Hargreaves, Margaret	08/01/2011	Pilot project to develop a cross regional BMAP biospecimen database(supplement)	National Institutes of Health	\$116,534	1U54CA153708-01
	Wolff, Steven	09/01/2011	Minority based community clinical oncology program at Meharry Medical College(supplement)	National Cancer Institute (NCI)	\$103,787	5 U10CA107612 08
	Wolff, Steven	11/02/2011	Meharry Medical College clinical research and education for career development(CRECD)	National Center for Research Resources (NCRR)	\$2,348,022	
	Okafor, Henry	11/25/2011	Breaking barrriers to optimal self care after acute heart failure(subcontract)	National Institutes of Health	\$145,398	
	Hargreaves, Margaret	12/01/2011	Meharry Medical College-CHC Community Networks Program Center(supplement)	National Institutes of Health	\$164,552	1U54CA153708-01
	Patel, Kushal	09/01/2011	A questionnaire to assess biospecimen donation among African Americans (MeTRC)	National Center for Research Resources (NCRR)		1 U54 RR026140 01

Department	PI	SubmitDate	Title	Sponsor	Y1Request	SponsorNumber
Microbiology and Immunology	Chaudhuri, Gautam	07/05/2011	Leishmania-induced knockdown of ncRNA biosynthesis in macrophages	National Institute of Allergy/Infectious Diseases (NIAID)	\$1,250,000	1 R01 AI095639 01A1
	Kinlock, Ballington	08/15/2011	The role of APOBEC3G in HIV-1 transmission	National Institute of Allergy/Infectious Diseases (NIAID)	\$76,261	1 F31 AI094984 01A1
	Chaudhuri, Gautam	08/29/2011	BRCA2 deficiency-induced impairment of interferon signaling in lymphocytes as a mechanism of immune dysfunction in breast cancer patients	Department of Defense (DOD)	\$375,000	
	Chaudhuri, Gautam	09/06/2011	Coordinate regulation of gene pairs with overlapping bidirectional promoters	National Science Foundation	\$1,358,643	
	Nowicki, Stella	10/17/2011	Immuno-responsiveness of monocytes during pregnancy: vitamin D3, CD55, and race	National Institutes of Health	\$275,000	
	Ramasamy, Raju	10/16/2011	Role of PI3K/Akt/mTOR signaling in alphavirus genome evolution	National Institutes of Health	\$275,000	1 R21 AI101555 01
	Misra, Smita	09/26/2011	Dysregulated cytosolic trapping of ZAR2 a determinant of sporadic breast cancer	National Institute of General Medical Sciences (NIGMS)	\$300,000	1 SC2 GM102076 01
	Ramasamy, Raju	10/27/2011	Control of melanoma cell signaling through engineered RNA replicons	Department of Defense (DOD)	\$200,000	
	Tillery, Lakeisha	07/01/2011	Protease-activated receptor-3 mediates eNOS signaling and vascular inflammation	The American Physiological Society	\$27,300	
	Mittal, Mukul	10/27/2011	Dysregulation of dynactin-mediated protein retrograde transport as a determinant of the etiology and progression of aggressive melanoma	Department of Defense (DOD)	\$200,000	
	Chaudhuri, Gautam	10/27/2011	SLUG-repression of dynamin 2 is responsible for surface growth factor receptor accumulation and thus aggressiveness of SLUG-high melanoma cells	Department of Defense (DOD)	\$200,000	
	Chaudhuri, Gautam	11/09/2011	APOBEC3G mediated regulation of human lung cancer cell proliferation through the control of the bioavailability of replication promoting hY ncRNAs	Department of Defense (DOD)	\$75,000	
	Chaudhuri, Gautam	11/23/2011	Aggressiveness of TNBC cells contributed by SLUG repression of APOBEC3G	National Cancer Institute (NCI)	\$275,000	1 R21 CA171252 01
	Chaudhuri, Gautam	11/23/2011	Mechanism of retinoid-resistance in triple-negative breast cancer	National Cancer Institute (NCI)	\$1,250,000	1 U01 CA171256 01
Ramasamy, Raju	11/09/2011	Regulation of innate signaling by erlotinib and gefitinib in lung cancer cells	Department of Defense (DOD)	\$75,000		
Neuroscience and Pharmacology	Ansah, Twum-Ampofo	09/25/2011	Serotonin and neuropsychiatric symptoms of Parkinson's disease	National Institute of General Medical Sciences (NIGMS)	\$1,250,000	1 SC1 GM102063 01
	Hood, Darryl	10/05/2011	Normalizing exposure induced phenotypes with perinatal combinatorial therapies	National Institute of Environmental Health Sciences (NIEHS)	\$875,000	1 R01 ES021834 01
	Chirwa, Sanika	11/16/2011	Sleep and adverse pregnancy outcomes	National Institutes of Health	\$275,000	
	McLean, Keri	12/13/2011	Modulation of opioid receptor-mediated antinociception by membrane estrogen recep	National Institute of Neurological Disorders/Stroke (NINDS)	\$76,261	1 F31 NS077843 01A1
OB/GYN	Ladson, Gwinnett	09/23/2011	Enhancing care for Spanish speaking or limited english speaking women through the centering pregnancy model of group prenatal care	March of Dimes Foundation	\$20,000	
	Nowicki, Bogdan	10/13/2011	Pathogen mediated placental dysfunction	National Institute of Allergy/Infectious Diseases (NIAID)	\$1,750,000	1 R01 AI101120 01
	Halder, Sunil	11/16/2011	Role of vitamin D3 in the regulation of steroid hormone functions in uterine leiomyomas	National Institute of Child Health/Human Dev. (NICHD)	\$275,000	1 R21 HD070143 01A1
	Al-Hendy, Ayman	12/01/2011	Prevention of post-angioplasty stenosis of rat carotid artery by arkadia gene silencing	Agency for International Development	\$90,960	

Department	PI	SubmitDate	Title	Sponsor	Y1Request	SponsorNumber
	Al-Hendy, Ayman	12/01/2011	Gene therapy of uterine leiomyoma	Agency for International Development	\$99,932	
	Al-Hendy, Ayman	12/01/2011	Gene therapy of endometriosis; adenovirus mediated delivery of dominant negative estrogen receptors to treat endometriosis in an animal model	Agency for International Development	\$90,960	
Oral Biology & Research	Xie, Hua	07/16/2011	Distribution correlation of P. gingivalis and S. cristatus in dental plaque	/Craniofacial Research (NIDCR)	\$275,000	1 R21 DE022428 01A1
	Xie, Hua	10/05/2011	Identification of targets for anti-P. gingivalis colonization	National Institute of Dental /Craniofacial Research (NIDCR)	\$1,250,000	1 R01 DE022774 01
Pathology, Anatomy and Cell Biology	Marshall, Dana	10/17/2011	Oral microbiome in the development of oral squamous cell carcinoma	National Institutes of Health	\$275,000	1 R21 CA169783 01
	Marshall, Dana	11/23/2011	Nanophysiometric and microscale proteomic predictors of TNBC therapeutic outcomes	National Cancer Institute (NCI)	\$275,000	1 R21 CA171259 01
Physiology	Gangula, Pandu	09/25/2011	Tetrahydrobiopterin and its role in stomach emptying(SC1)	National Institute of General Medical Sciences (NIGMS)	\$1,250,000	1 SC1 GM102035 01
	Gangula, Pandu	10/05/2011	Mechanism of NRF2 and estradiol on gastric nNOS function	National Institute of Diabetes/Digestive/Kidney (NIDDK)	\$1,911,916	1 R01 DK096091 01
	Archibong, Anthony	10/17/2011	Restoration of function to CTX-damaged ovaries with BM-derived stem cells	National Institute of Child Health/Human Dev. (NICHD)	\$100,000	1 R03 HD073466 01
	Nowicki, Stella	09/01/2011	CD55, Vitamin D3, and race in preterm labor (MeTRC)	National Center for Research Resources (NCRR)		1 U54 RR026140 01
Psychiatry	Bailey, Rahn	10/28/2011	Substance abuse initiative(subcontract)	Substance Abuse and Mental Health Services Administration	\$7,500	
SOGS Dean	Lima, Maria	09/26/2011	RISE option III The Meharry RISE initiative	National Institute of General Medical Sciences (NIGMS)	\$6,387,797	2 R25 GM059994 13
Surgery	Miller-Hughes, Stephania	09/01/2011	Community partnership to reduce the diabetes/obesity burden among African American women in Nashville, TN(MeTRC)	National Center for Research Resources (NCRR)		1 U54 RR026140 01
	Ukoli, Flora	01/10/2012	Research training program developing a prostate cancer education intervention	National Institutes of Health	\$150,000	